

**SHURE**



*MXWAN8  
Audio Network Interface*

## **+** MICROFLEX WIRELESS CONTROL SOFTWARE

Browser-based control software that offers comprehensive remote monitoring and control of all settings and status parameters over the web, a corporate network or an AV local area network.

Spectrum scanner provides data on spectrum availability with channel count estimates

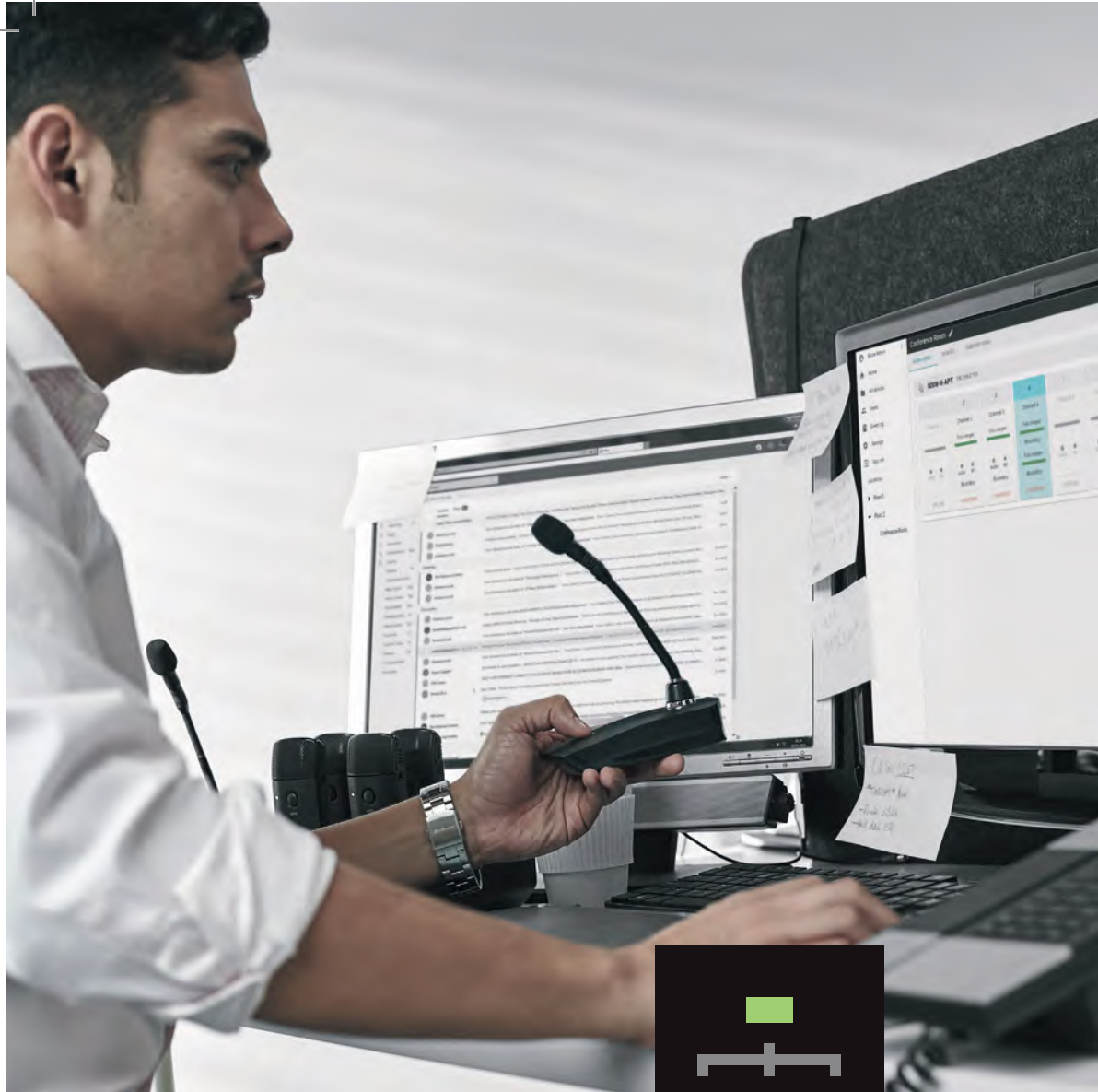
Battery life and charge level monitoring in hours and minutes

Mic gain, low and high pass audio adjustment

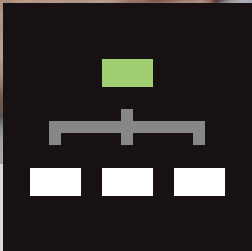
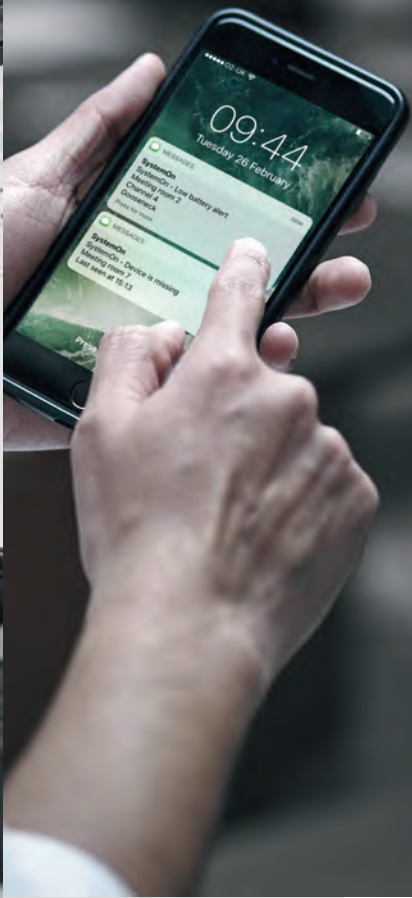
Individual and global mic controls for powering on/off and triggering mute and standby modes

Set preferences to program default system behavior

Note: Microflex Wireless Control Software allows monitoring and control of individual MXW systems at a time. For consolidated overview of all MXW systems across an entire network, SystemOn Software is recommended.



**SHURE**



**MANAGING SCALE**

Conference rooms need to be ready to go on short notice and managing the scale of building-wide or campus-wide deployments can be complicated.

**SECURE SYSTEM**



**PEACE OF MIND**

Stay one step ahead with text and email alerts to prevent potential issues before they happen.

**TIME SAVING**

Maximize control of your organization's audio on your mobile device, allowing you to go about your day and be notified when something needs your attention, rather than manually checking each room to make sure the system is ready to go.





# SYSTEMON AUDIO ASSET MANAGEMENT SOFTWARE

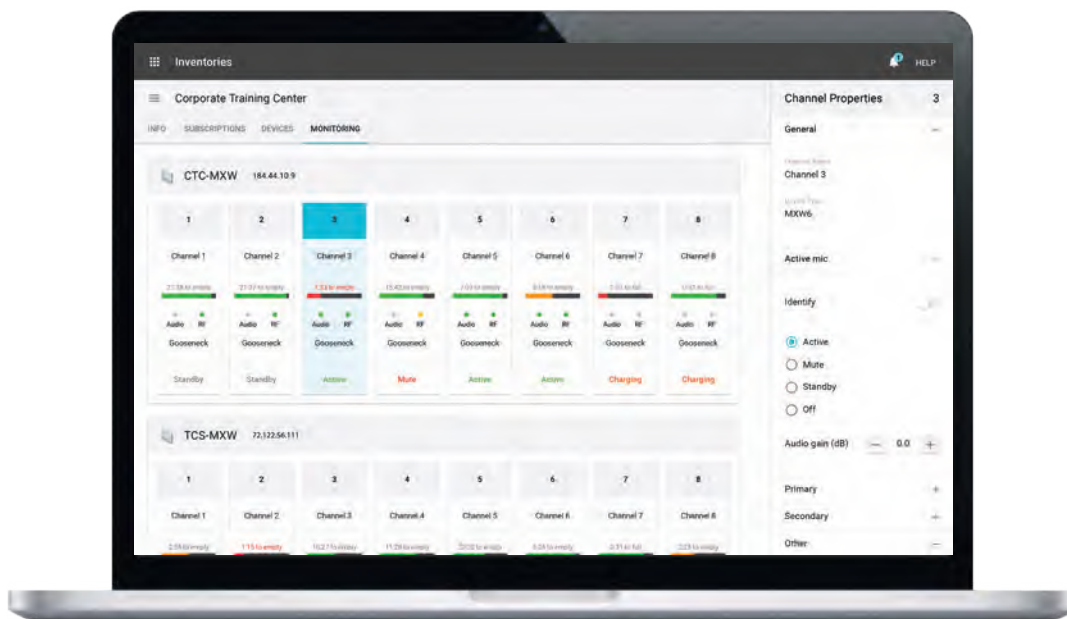
Conquer complexity and scale. Developed to make managing large-scale Shure audio hardware deployments easier for you.

## HOW IT WORKS

You can't be everywhere at once but everywhere can be with you. Monitor inventory and battery health in real time and troubleshoot on the go. Avoid dead air, minimize cost and enhance resource use with simple, sophisticated software.

SystemOn supports Shure U LX-D® Digital Wireless Systems, SCM820 Intellimix® Automatic Mixers, Microflex® Advance™ Ceiling Array Microphones, Intellimix® P300 Audio Processor, ANIUSB-MATRIX USB Audio Network Interface, Microflex® Wireless

The software is available through a subscription model. Each IP-addressable device requires one license. For more details, visit [www.shure.com](http://www.shure.com)





**SHURE**

# BEST IN CLASS WIRELESS PERFORMANCE

**WITH MICROFLEX WIRELESS AND  
INTELLIMIX® P300 AUDIO CONFERENCE PROCESSOR**

Shure Microflex Wireless Microphones, together with the IntelliMix P300 Audio Conferencing Processor, help you elevate your audio for AV conferencing and presentations.

Best-in-class wireless performance, plus powerful IntelliMix digital signal processing, combine to provide customizable microphone placement. And a variety of connectivity options make joining room systems with laptops or mobile devices easier than ever.



The Microflex Wireless MXWAPT8 Access Point Transceiver, together with the P300 Audio Conferencing Processor, deliver natural voice quality and excellent speech intelligibility for conferencing and presentations.

A selection of versatile wireless microphones offer a customizable, license-free AV conferencing system.

The P300 offers multi-channel acoustic echo cancellation and noise reduction plus IntelliMix automatic mixing optimized for AV conferencing applications.

Simple to set up, discreet and versatile, this bundle simplifies the ordering process, while offering a discounted price.

*Please note that these items may ship separately*



## **MXWAPT8 ACCESS POINT TRANSCEIVER AND P300**

8-channel wireless access point  
compatible with Microflex Wireless  
microphone systems

Operates in license-free 1.9 GHz (or  
DECT) band

8 channels of acoustic echo cancellation  
and noise reduction

Dante (10 in / 2 out), analog (2 in / 2 out)

USB (1 in/out) and 3.5 mm connectivity  
options for connecting to room systems,  
laptops and mobile devices





**SHURE**

# CONFERENCE ROOM

Microflex® Wireless systems bring wireless elegance and flexibility to meeting spaces where a wired solution is not preferred, or to historic buildings where running cables and drilling holes is not possible.

With a single Microflex Access Point Transceiver mounted discreetly in the room, you can easily manage up to 8 wireless microphones in any configuration your application requires—boundary, gooseneck, bodypack or handheld. Add more Access Point Transceivers for up to 160 compatible channels (in High Density Mode, region dependent). When you need to reconfigure a room—from a formal boardroom setup to an AV workroom—modular, wireless components easily flex to meet the channel capacity and transmitter requirements of new conferencing applications.

Additionally, Microflex Wireless systems are fully compatible with leading third-party control systems such as AMX® and Crestron, as well as AV conferencing solutions like Cisco® and Polycom®.



01

#### Wireless Microphones

Elegant boundary, gooseneck, bodypack and handheld transmitters send and receive audio signal and data wirelessly to the Access Point Transceiver.

02

#### Access Point Transceiver

Manages the wireless link with transmitters and connects to the Audio Network Interface via Ethernet over a single Cat5e cable for power (PoE), digital audio and control signal routing.

#### Networked Charging Stations

2-, 4- and 8-bay stations fully charge batteries within 2 hours and connect to the Audio Network Interface via Ethernet over Cat5e cable. They provide real-time monitoring of charge status and one-touch linking of docked wireless microphones.

04

#### Audio Network Interface

Converts Dante™ digital networked audio from the Access Point Transceiver to per-channel analog audio output for connectivity to teleconference systems, local sound reinforcement or other audio components. Also provides a 4-port switch, making it easy to set up a Microflex Wireless system without needing additional networking hardware.

#### Microflex Wireless Control Software

Browser-based software provides remote control of key set-up and monitoring functions. Remotely view spectrum usage and remaining battery life in hours and minutes, adjust audio levels, set mute button and light ring behavior, and configure system connections. Also allows custom integration into third party control systems such as AMX® and Crestron®.

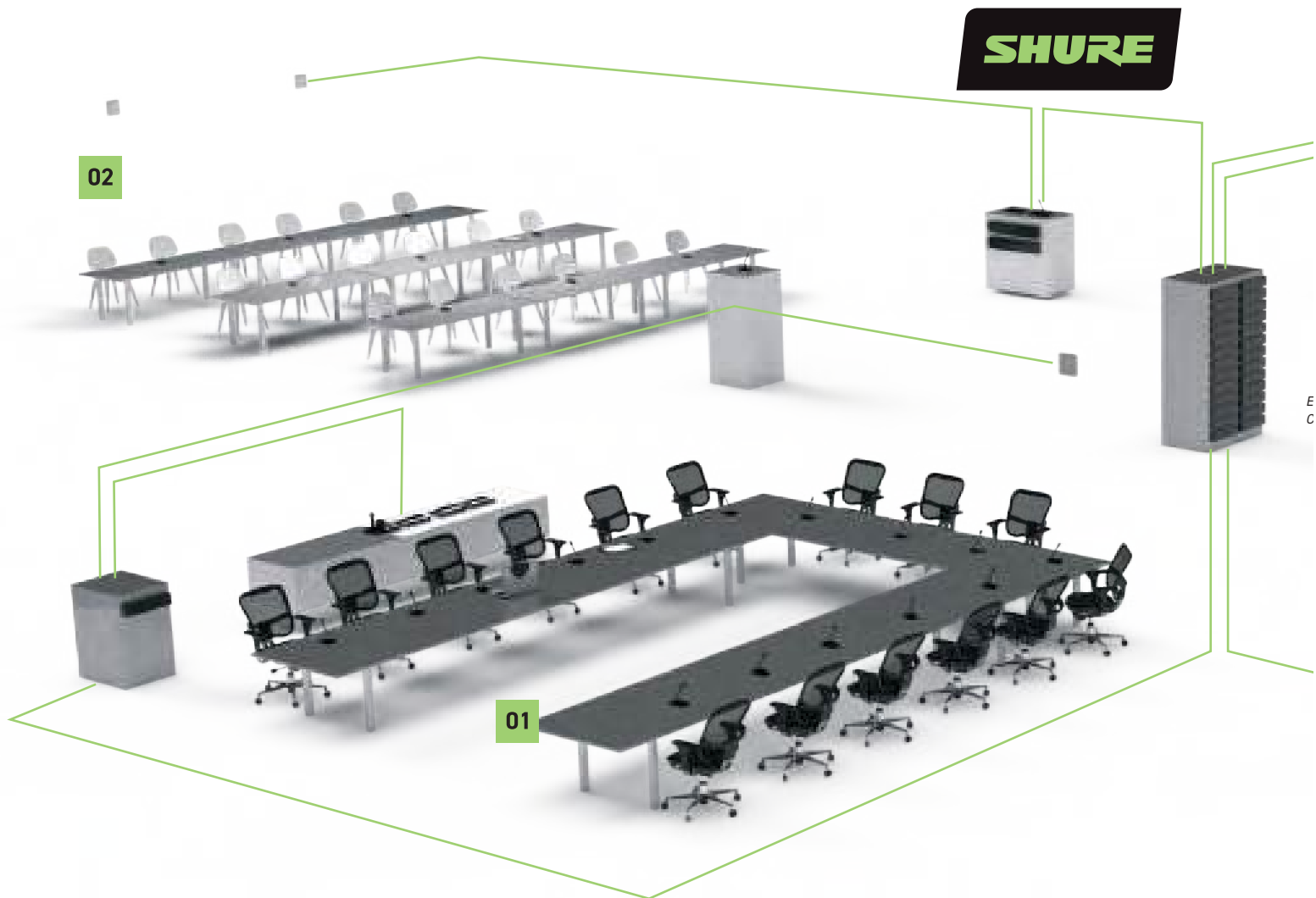


The SHURE logo is positioned in the top right corner of the page. It consists of the word "SHURE" in a bold, white, sans-serif font, set against a dark, rounded rectangular background.

# ENTERPRISE APPLICATIONS

For sites where AV / IT teams manage diverse AV applications that span rooms, floors, buildings and campuses, networkable Microflex® Wireless components extend the reach and efficiency of team resources.





Microflex Wireless extends the Shure legacy of best-in-class audio to boardrooms, huddle rooms and meeting spaces, as well as education and training facilities of all sizes, delivering an enterprise-scale solution with confidence. All components in the Microflex Wireless system are connected and accessible over Ethernet networks. Any number of networked systems can be setup, managed, monitored and controlled on-site or remotely via web browser.

Shure SystemOn™ Audio Asset Management Software provides comprehensive centralized IT support and real-time troubleshooting across entire networks, particularly for large-scale deployments. The software provides a hardware status view from one central portal and proactively identifies issues such as low batteries and missing or offline equipment. AV / IT admins are able to detect problems before they become critical and respond quickly and efficiently, eliminating the need for on-site troubleshooting.

Additionally, Microflex Wireless systems are fully compatible with leading third-party control systems such as AMX® and Crestron, as well as AV conferencing solutions like Cisco® and Polycom®.

**01****Multi-Purpose Room**

Flexible, scalable rooms that are easily reconfigured for training sessions and events.

**02****Auditorium / Theater / Lecture Hall**

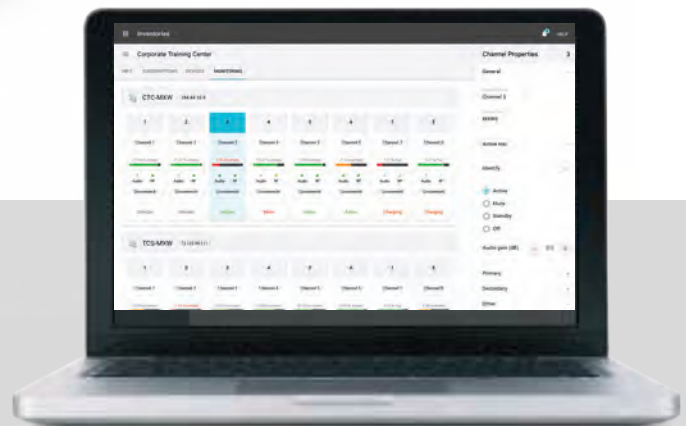
Media rich presentation halls for direct, keynote-type presentations or lectures with audience participation.

**03****AV Conferencing Room / Huddle Room**

Intimate conference spaces for engaging with remote participants.

**04****Boardroom**

Highly aesthetic spaces for executive-level meetings and presentations.





**SHURE**





**SHURE**

**SHURE**

# UNCOMPROMISING DIGITAL WIRELESS

ULX-D® DIGITAL WIRELESS





# GENERATIONS AHEAD

Shure ULX-D Digital Wireless offers uncompromising 24-bit audio clarity and extremely efficient RF performance with single, dual, and quad channel receivers for any size professional and installed sound reinforcement application. Scalable, intelligent hardware delivers uncompromising digital wireless performance, with a wide selection of trusted Shure microphones to choose from. And with the latest additions, the ULX-D boundary and gooseneck transmitters, two additional form factors – ideal for large meetings at conference and convention centers, or for AV conferencing where DECT spectrum is not an option – complement the range.

Unmatched spectrum efficiency enables a dramatic increase in the number of simultaneous active transmitters on one TV channel, with rock-solid signal over the entire range. Optional rechargeable accessories eliminate the need for disposable batteries while offering extended run time and metering accuracy in hours and minutes. For secure transmission, all ULX-D components include AES-256 encryption. Generations ahead of any other available system in its class, ULX-D brings a new level of performance to professional and installed sound reinforcement.

# ADVANTAGES

**SHURE**

## BREAKTHROUGH TECHNOLOGIES

ULX-D® Digital Wireless represents an incredible advancement in wireless performance. Shure innovation brings to market new features and technologies that dramatically increase spectrum efficiency, dependability, and signal routing convenience.

### SIGNAL STABILITY

The 24-bit / 48 kHz digital audio delivers incredibly clear and accurate capturing of source material. It offers a wide frequency range with flat response for superb low range and transient response.



### TRANSPARENT 24-BIT DIGITAL AUDIO



Signal stability with no audio artifacts extends over the entire 100 meter (300 feet) line-of-sight range using standard supplied dipole antennas.

### ADVANCED ENCRYPTION

The AES-256 encryption provides enhanced privacy – for installations where security is key. A new, unique, randomized encryption key is generated every time encryption is enabled.



### NETWORKED CONTROL

Ethernet networking enables streamlined setup across multiple receivers, Wireless Workbench integration, frequency coordination via Axient Spectrum Manager, AMX® and Crestron Control® as well as Dante™ digital networked audio with full Dante Domain Manager (DDM) compatibility.

### SCALABLE HARDWARE

ULX-D receivers are available in single, dual and quad channel configurations, along with a wide selection of Shure microphones to accommodate any size installation.



### LITHIUM ION RECHARGEABILITY

Lithium Ion rechargeability provides up to 9 hours of use on a single charge, while displaying battery life in hours and minutes accurate to 15 minutes.

### VARIETY OF FORM FACTORS

ULX-D bodypack and handheld transmitters provide complete mobility for presenters, while boundary and gooseneck base transmitters accommodate meeting rooms with flexible seating layouts. Boundary and Gooseneck Base transmitters are available in black and white.



### HIGH DENSITY MODE

Optimizes the system by running at 1mW RF transmit power and reducing the modulation bandwidth. The result is nearly three times the number of useable frequencies, enabling up to 47 systems in an open 6MHz TV channel.

### AUDIO SUMMING

(Dual/  
Quad only)

Combining of selected audio channels to be routed to all selected outputs and allows the receiver to function as a 2 or 4 channel mixer. All XLR outputs of the selected channels provide the summed audio.



### BODYPACK FREQUENCY DIVERSITY

(Dual/Quad only)

The signals from a common source via two bodypack transmitters with different frequencies are routed to receiver's audio outputs. In case of RF interference, switching between channels occurs in milliseconds, without interrupting the audio.



## ADVANTAGES

**SHURE**

# SOFTWARE

## SYSTEMON



### TOTAL COMMAND

#### Total Command of Shure Networked Audio Hardware

Shure SystemOn Audio Asset Management Software was developed for managing mission critical or large-scale deployments of Shure audio hardware, including ULX-D®, across corporate and higher education networks from one central platform. SystemOn tracks audio levels, battery life and RF/spectrum status in real time, enabling IT administrators and AV technicians to monitor and control Shure hardware devices remotely using a laptop, smartphone or tablet.

## CHANNELS



### SYSTEM INTERACTION

#### System Interaction over WiFi via iOS Devices

Command and control your wireless on the go and roam the performance space while monitoring key Shure wireless system parameters in real time from any iOS device.

Real-time, precision monitoring of critical device parameters, including:

RF level metering

Audio level metering

Transmitter battery level

Frequency Assignments with band, group and channel info

RF interference indicator

Encryption status

Frequency diversity status

## ADVANTAGES



**SHURE**

**Dante™**



### Digital Audio Networking Over Ethernet

Dante is a total solution for transporting low latency uncompressed audio over standard IP Ethernet networks with sample accurate synchronization, automatic device discovery, and easy to use signal routing.

Send multichannel audio from ULX-D receivers to Dante-equipped mixers over a single ethernet cable

Dante Domain Manager (DDM) compatible for managing enterprise-wide Dante audio network deployments

Auto-discovery and easy audio networking with Dante Controller

Compatible with ULXD4D & ULXD4Q receivers

## WIRELESS WORKBENCH



## COMPREHENSIVE CONTROL

### Comprehensive Control for Shure Networked Wireless Systems

Shure Wireless Workbench® 6 software offers comprehensive control for networked Shure wireless systems and provides a rich interface to manage every facet of a performance over the network.

Perform real-time plotting of scan data from networked Shure scanning hardware in a rich graphical environment

Monitor and make live remote adjustments to frequency, audio level, RF muting and other equipment settings

Configurable interference and hardware alerts

Assign compatible frequencies to networked Shure wireless devices

Automatically calculate backup frequencies



## COMPONENTS



### + ULXD4D DUAL & ULXD4Q QUAD CHANNEL DIGITAL WIRELESS RECEIVER

Shure ULXD4D Dual Channel Digital Wireless Receiver offers two / four channels of uncompromising audio quality, RF signal stability and efficiency, and advanced setup features in a single rack unit. Rugged, yet lightweight and compact, the all-metal chassis houses two / four independent receivers, each with its own audio and RF meters, gain control, and receiver outputs that can be either direct or summed for flexible signal routing.

With RF cascade and two Ethernet ports, units easily can share RF signal and be networked together for simplified frequency coordination and deployment. For networked audio applications, Dante™ digital networking allows multiple channels of audio to be transmitted and received over a single Ethernet cable. When more compatible frequencies over shorter distances, High Density mode can be enabled to dramatically increase the number of available open frequencies.



# COMPONENTS

## + ULXD4 DIGITAL WIRELESS RECEIVER

The Shure ULXD4 is a half-rack, networkable wireless receiver for use with ULX-D® Digital Wireless Systems.

With an expansive set of professional features, including 24-bit / 48 kHz digital audio quality, efficient and intelligent RF performance, and AES 256-bit encryption, ULX Digital offers uncompromising wireless tailored for professional sound reinforcement.



With the suite of features and benefits ULX-D® Digital Wireless Systems offer, the ULXD4D and ULXD4Q are truly generations ahead of any other dual / quad digital receiver in its class, and brings a new level of performance to professional sound reinforcement.



## COMPONENTS

**SHURE**

### + ULXD2 HANDHELD WIRELESS MICROPHONE TRANSMITTER

With a wide variety of interchangeable Shure microphone cartridges, the ULXD2 delivers uncompromising audio quality and RF performance, and AES 256-bit encryption for secure transmission.

The ULXD2 handheld offers over 9 hours of continuous battery life with Shure rechargeable battery or 8 hours with alkaline battery

#### Features:

AES 256-bit encryption for applications for which secure transmission is needed

Proprietary Shure Gain Ranging optimizes the system's dynamic range for any input source, eliminating the need for transmitter gain adjustments

Optional Shure SB900A lithium-ion rechargeable battery pack provides over 9 hours of battery life, precision metering in hours and minutes, and zero memory effect

External charging contacts for docked charging (with the SBC200 Dual Docking Charger)

Transmitter Mute Mode repurposes the On/Off switch into a mute switch, enabling audio muting while preserving RF channel presence

Backlit LCD with easy to navigate menu and controls

Rugged metal construction

Frequency and power lockout



## COMPONENTS

**SHURE**

### + ULXD1 BODYPACK WIRELESS MICROPHONE TRANSMITTER

With a rugged yet lightweight aluminum case, the ULXD1 delivers uncompromising audio quality and RF performance, AES 256-bit encryption for secure transmission, and advanced rechargeability options for professional sound reinforcement applications.

#### Features:

AES 256-bit encryption for applications requiring secure data transmission

Proprietary Shure Gain Ranging optimizes the system's dynamic range for any input source, eliminating the need for transmitter gain adjustments

Optional Shure SB900A lithium-ion rechargeable battery provides over 9 hours of battery life, precision metering in hours and minutes, and zero memory effect

External charging contacts for docked charging (with the SBC200 Dual Docking Charger)

Backlit LCD with easy to navigate menu and controls

Rugged metal construction

Detachable  $\frac{1}{4}$  wave antenna

Frequency and power lockout



## COMPONENTS

**SHURE**



### **+ ULXD6 BOUNDARY WIRELESS MICROPHONE TRANSMITTER**

The ULXD6 Boundary Microphone Transmitter offers a low-profile boundary form factor that is ideal for tabletop use at meetings and events where wired microphones are impractical. Paired with a ULX-D or QLX-D digital receiver, the ULXD6 creates a system with low latency, long transmission range, and high channel count, delivering exceptional performance in large meeting venues where live sound reinforcement is required.



## COMPONENTS

**SHURE**



### **+ ULXD8 GOOSENECK WIRELESS MICROPHONE TRANSMITTER**

The ULXD8 Gooseneck Base Transmitter offers a flexible gooseneck mic form factor that is ideal for use at meetings and events where wired microphones are impractical. Paired with a ULX-D or QLX-D digital receiver, the ULXD8 creates a system with low latency, long transmission range, and high channel count, delivering exceptional performance in large meeting venues where live sound reinforcement is required.

**+ NEW**



RECHARGEABILITY

SHURE



# GET FULLY CHARGED

WITH OPTIONAL RECHARGEABLE BATTERIES AVAILABLE FOR EVERY ULX-D DIGITAL WIRELESS TRANSMITTER, YOU'RE ALWAYS IN CONTROL. BATTERY LIFE CAN BE MONITORED REMOTELY DOWN TO THE MINUTE USING WIRELESS WORKBENCH OR SYSTEMON SOFTWARE, PROVIDING PEACE OF MIND FOR ANY LIVE EVENT, MEETING, OR PRESENTATION.



# RECHARGEABILITY

**SHURE**

## + SB900A

### Rechargeable Battery

Rechargeable Lithium-Ion Battery for use with Shure wireless systems



## + SBC200

### Dual Docking Charging Station

Compact and portable two-Bay charger holds two SB900A batteries or ULXD1 & ULXD2 transmitters



## + SBC450

### 4-Bay Networked Docking Station

4-Bay Networked Docking Station for ULXD6 & ULXD8 transmitters



## + SBC220

### 2-Bay Networked Docking Charger

Compact 2-Bay networked docking station charges SB900A battery ULXD1, and ULXD2, wireless transmitters.



## + SBC800

### 8-Bay Charging Station

Charges up to eight SB900A batteries.



## + SBC250

### 2-Bay Networked Docking Station

Compact 2-Bay docking station charges ULXD6 or ULXD8 transmitters. Can be rack-mounted or wall-mounted with optional URT3 Rack Tray.



## + SBC850

### 8-Bay Networked Docking Station

8-Bay Networked Docking Station for ULXD6 & ULXD8 transmitters



**SHURE**



**SHURE**

**SOUND**  
**EXTRAORDINARY**

